

MAXIFORCE Specifications



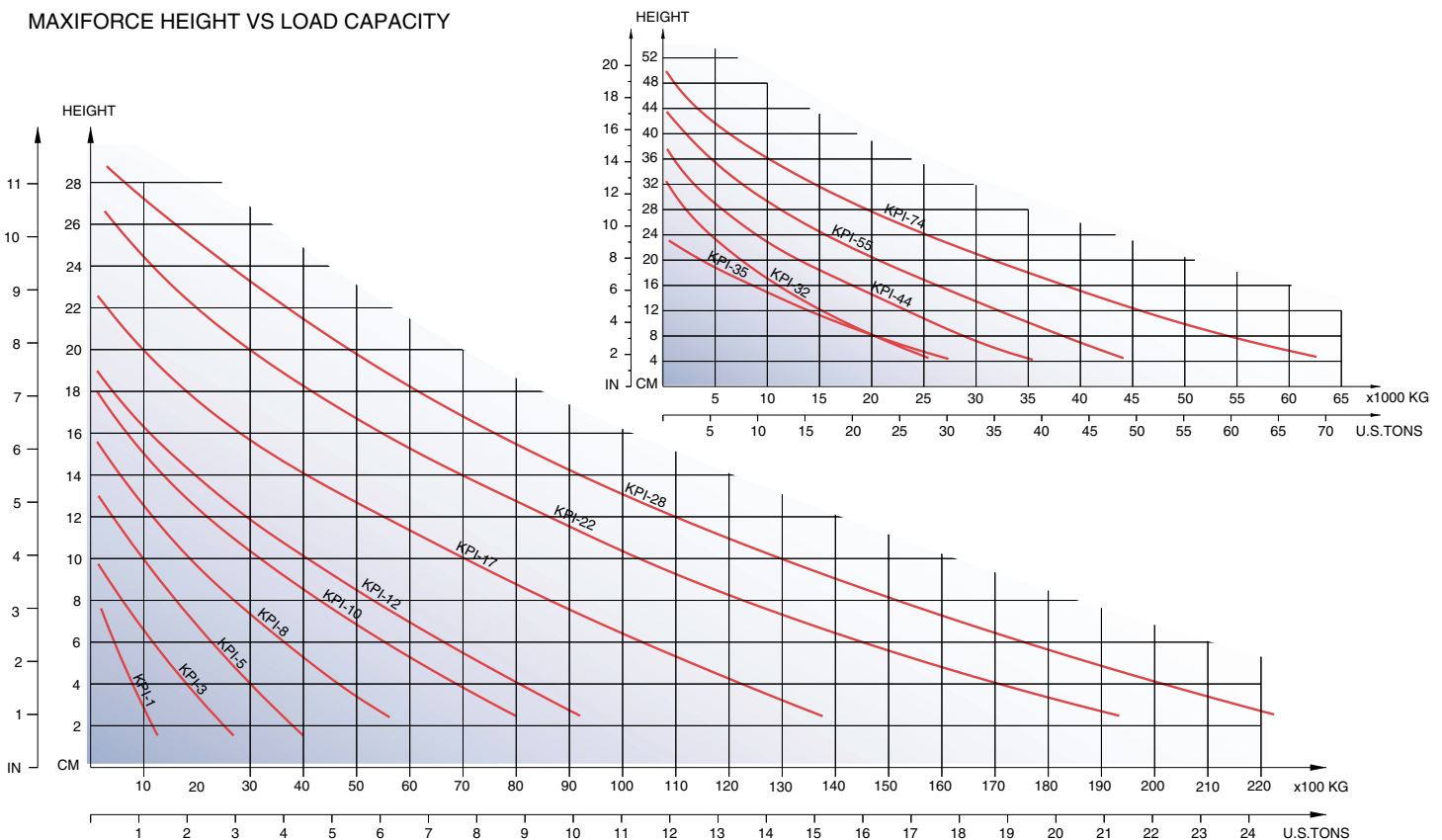
PART NO.	MODEL	DIMENSIONS ¹	CAPACITY	HEIGHT	WEIGHT
888110	KPI-1	6" X 6" X 5/8" 15.2 cm. X 15.2 cm. X 1.6 cm.	1.5 Tons 1,361 Kg.	3.4 in. 8.6 cm.	2 lbs 0.9 Kg.
888120	KPI-3	6" X 12" X 5/8" 15.2 cm. X 30.5 cm. X 1.6 cm.	3.2 Tons 2,903 Kg.	3.9 in. 9.9 cm.	3 lbs 1.4 Kg.
888130	KPI-5	10" X 10" X 5/8" 25.4 cm. X 25.4 cm. X 1.6 cm.	4.8 Tons 4,354 Kg.	5.6 in. 14.2 cm.	4 lbs 1.8 Kg.
888135	KPI-8	12" X 12" X 3/4" 30.5 cm. X 30.5 cm. X 1.9 cm.	7.6 Tons 6,895 Kg.	7.0 in. 17.8 cm.	5 lbs 2.3 Kg.
888138	KPI-10	12" X 18" X 3/4" 30.5 cm. X 45.7 cm. X 1.9 cm.	11.4 Tons 10,342 Kg.	7.0 in. 17.8 cm.	9 lbs 4.1 Kg.
888140	KPI-12	15" X 15" X 3/4" 38.1 cm. X 38.1 cm. X 1.9 cm.	12.0 Tons 10,886 Kg.	8.2 in. 20.8 cm.	10 lbs 4.5 Kg.
888150	KPI-17	15" X 21" X 3/4" 38.1 cm. X 53.3 cm. X 1.9 cm.	17.0 Tons 15,422 Kg.	9.2 in. 23.3 cm.	13 lbs 5.9 Kg.
888160	KPI-22	20" X 20" X 3/4" 50.8 cm. X 50.8 cm. X 1.9 cm.	21.8 Tons 19,777 Kg.	11.1 in. 28.2 cm.	16 lbs 7.3 Kg.
888165	KPI-28	20" X 26" X 3/4" 50.8 cm. X 66.0 cm. X 1.9 cm.	27.6 Tons 25,038 Kg.	12.0 in. 30.5 cm.	20 lbs 9.1 Kg.
888170	KPI-32	24" X 24" X 3/4" 61.0 cm. X 61.0 cm. X 1.9 cm.	31.8 Tons 28,848 Kg.	13.1 in. 33.3 cm.	22 lbs 10.0 Kg.
888180	KPI-35L	15" X 42" X 3/4" 38.1 cm. X 106.7 cm. X 1.9 cm.	34.7 Tons 31,479 Kg.	9.8 in. 24.9 cm.	23 lbs 10.4 Kg.
888190	KPI-44	28" X 28" X 3/4" 71.1 cm. X 71.1 cm. X 1.9 cm.	43.8 Tons 39,734 Kg.	15.5 in. 39.4 cm.	30 lbs 13.6 Kg.
888195	KPI-55	32" X 32" X 1" 81.3 cm. X 81.3 cm. X 2.5 cm.	55.0 Tons 49,895 Kg.	17.2 in. 43.6 cm.	40 lbs 18.1 Kg.
888200	KPI-74	36" X 36" X 1" 91.4 cm. X 91.4 cm. X 2.5 cm.	72.3 Tons 65,589 Kg.	20.0 in. 50.8 cm.	60 lbs 27.2 Kg.

¹ Dimensions do not include eyelets.
Lifting Capacity and Height Will Vary According to Air Pressure and Bag Contact Area.

MAXIFORCE Specifications

Kevlar Reinforced Type		KPI-1	KPI-3	KPI-5	KPI-8	KPI-10	KPI-12	KPI-17	KPI-22	KPI-28	KPI-32	KPI-35L	KPI-44	KPI-55	KPI-74
Part Number		888110	888120	888130	888135	888138	888140	888150	888160	888165	888170	888180	888190	888195	888200
*Lifting Capacity at 118 PSI (8 Bar)	Tons KG	1.5 1340	3.2 2950	4.8 4344	7.6 6951	11.4 10342	12.0 10845	17.0 15425	21.8 19826	27.6 25090	31.8 28947	34.7 31463	43.8 39789	55.0 50000	72.3 65704
Size	Length	Inches (mm)	6(152)	6(152)	10(254)	12(305)	18(457)	15(381)	21(533)	20(508)	24(609)	42(1066)	28(711)	32(812)	36.6(930)
	Width	Inches (mm)	6(152)	12(305)	10(254)	12(305)	12(305)	15(381)	20(508)	26(660)	24(609)	15(381)	28(711)	32(812)	26.6(930)
	Thickness	Inches (mm)	.6(15)	.6(15)	.6(15)	.6(15)	.8(20)	.8(20)	.8(20)	.8(20)	.8(20)	.8(20)	.8(20)	.8(20)	.8(20)
*Lifting Heights;	Inches (mm)	3.4(86)	3.9(99)	5.6(142)	7(177)	7(177)	8.2(208)	9.2(233)	11.1(282)	12(305)	13.2(333)	9.8(249)	15.5(394)	17.2(436)	20.0(508)
Maximum Working Pressure:	PSI (Bar)	118(8)	118(8)	118(8)	118(8)	118(8)	118(8)	118(8)	118(8)	118(8)	118(8)	118(8)	118(8)	118(8)	118(8)
Test Pressure:	PSI (Bar)	236(16)	236(16)	236(16)	236(16)	236(16)	236(16)	236(16)	236(16)	236(16)	236(16)	236(16)	236(16)	236(16)	236(16)
Bursting Pressure Minimum:	PSI (Bar)	700(47.6)	700(47.6)	700(47.6)	700(47.6)	700(47.6)	700(47.6)	700(47.6)	700(47.6)	600(40.8)	600(40.8)	600(40.8)	475(32.3)	475(32.3)	475(32.3)
Air Requirement at 118 PSI (8 Bar)	Cubic Ft. (liters)	.14(4)	.35(10)	.77(22)	1.8(51)	2.8(79)	3.0(84)	4.9(138)	7.3(208)	11(311)	13.8(390)	11.7(332)	21.6(613)	34(969)	47.0(1329)
Inflation Time	Seconds	1	1	2	2	3	3	4	7	10	11	12	20	35	53
Weight (approx.)	Lbs (KG)	1.1(.5)	2.2(1)	3.1(1.4)	6(2.8)	9(4.1)	8(3.6)	11(5)	15(6.8)	19(8.6)	21(9.5)	22(10)	29(13)	40(18)	60(27)
Short Term Temperature Range	°F °C	-75 to +220 -60 to +105													
Continuous Duty Temperature Range	°F °C	-40 to +150 -40 to +65													
Material	Neoprene with Kevlar Reinforcement														
No. of Reinforcing Layers Each Side	3														
Replaceable Nipple	yes														
Molded Non-Slip Surface	yes														
Bright Yellow "X" Molded into Sides	yes														
Made in U.S.A.	yes														
One Year Limited Warranty Against Defects in Materials and Workmanship															
*Lifting Capacity and Height Will Vary According to Air Pressure and Bag Contact Area.															

MAXIFORCE HEIGHT VS LOAD CAPACITY



PARATECH

SAVING LIVES WORLDWIDE SINCE 1963

8/99 22-098362

Paratech Incorporated, P.O. Box 1000, Frankfort, IL 60423 USA
 Phone: +815.469.3911 Fax: +815.469.7748
 www.paratech-inc.com E-mail: para-tec@ix.netcom.com